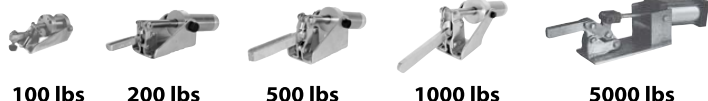
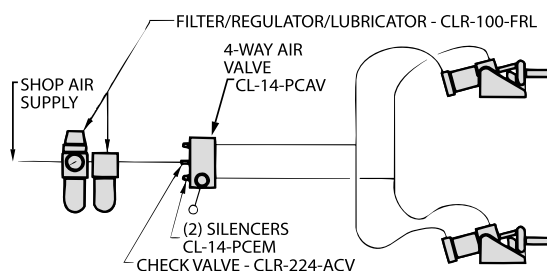
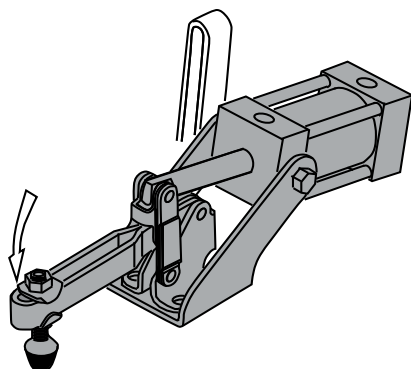


## AIR-POWERED CLAMPS



### Toggle Hold-Down Clamps

Similar to a vertical-handle hold-down clamp, except linkage is operated by a double-acting air cylinder instead of by hand. Toggle linkage provides high holding capacity and ensures positive mechanical locking even if air pressure fails. Complete selection of accessories including clamping valves, check valves, exhaust mufflers, and air fittings.



### Swing Clamps Section 7

Hold-down clamp with a clamping arm that rotates 90° for clear loading. Sturdy helical-cam mechanism first rotates arm, then clamps down. Double acting.

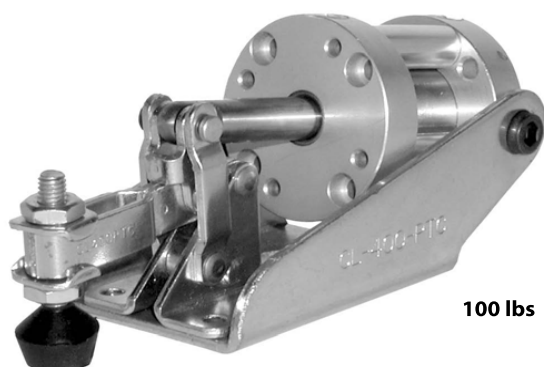


### Air Accessories

Complete selection of accessories including clamping valves, check valves, exhaust mufflers, and air fittings.

## AIR-POWERED TOGGLE CLAMPS

INFO+: SEE PAGE 415 FOR MATERIAL SPECIFICATIONS



100 lbs

### CL-400-PTC

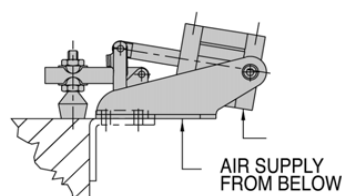
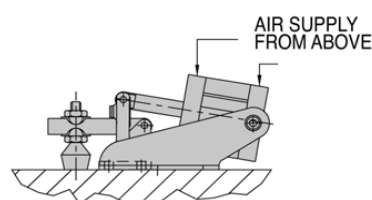
Super-compact hold-down clamp for applications where space is at a premium. Open arm allows spindle adjustment. Toggle linkage provides high holding capacity and ensures positive mechanical locking even if air pressure fails. Arm opens 100°. 3/4"-bore double-acting air cylinder with #10-32 ports. Supplied with #10-32 flat-cushion spindle CL-316112-FC and (2) CL-3166-TW flanged washers. 100-psi maximum input air pressure. Shipping weight 0.8 lbs. An optional bracket for side mounting is also available (CL-400-PCBR).

**Holding capacity:**

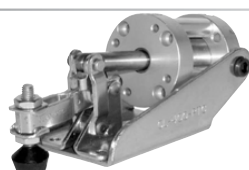
**100 lbs**

**Clamping force at 100 psi, at center of arm:**

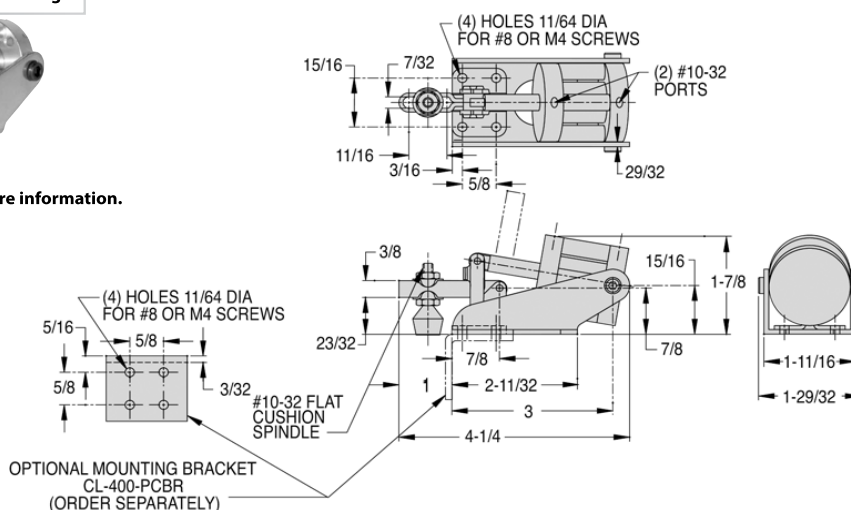
**100 lbs**



Also available with position sensing...

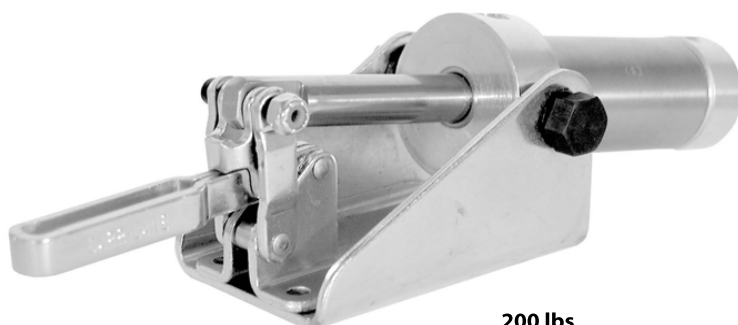


Please see our web catalog for more information.



## AIR-POWERED TOGGLE CLAMPS

INFO+: SEE PAGE 415 FOR MATERIAL SPECIFICATIONS



200 lbs

### CL-500-PTC

Small-yet-powerful hold-down clamp with a long open arm. Toggle linkage provides high holding capacity and ensures positive mechanical locking even if air pressure fails. Arm opens 100°. 1-1/4" bore double-acting air cylinder with 1/8"NPT ports. Accepts any 1/4-20 short spindle and (2) CL-148-TW flanged washers. 100-psi maximum input air pressure. Shipping weight 2.5 lbs.

**Holding capacity:**

200 lbs

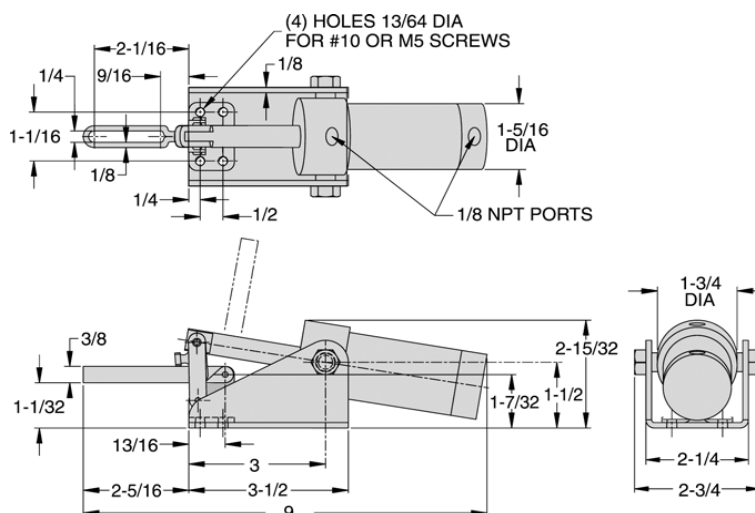
**Clamping force at 100 psi, at center of arm:**

200 lbs

Also available with position sensing:

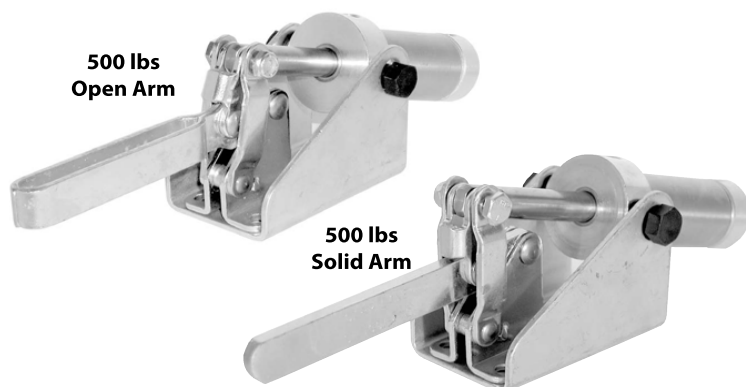


Please see our web catalog for more information.



## AIR-POWERED TOGGLE CLAMPS

INFO+: SEE PAGE 415 FOR MATERIAL SPECIFICATIONS



### CL-1000-PTC CL-1001-PTC

Popular medium-size hold-down clamp available with a solid arm, or an open arm for spindle adjustment. Toggle linkage provides high holding capacity and ensures positive mechanical locking even if air pressure fails. Arm opens 92°. 1-1/4" bore double-acting air cylinder with 1/8" NPT ports. Accepts any 5/16-18 short spindle and (2) CL-51610-TW flanged washers. Solid-arm version accepts a CL-518000-BR bolt retainer. 100-psi maximum input air pressure. Shipping weight 3.0 lbs.

**Holding capacity:**

**500 lbs**

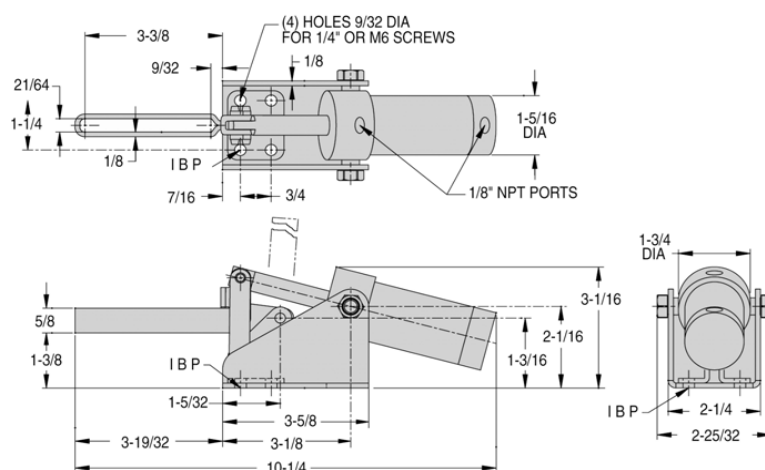
**Clamping force at 100 psi, at center of arm:**

**390 lbs**

Also available with position sensing:



Please see our web catalog for more information.



## AIR-POWERED TOGGLE CLAMPS

INFO+: SEE PAGE 415 FOR MATERIAL SPECIFICATIONS



1000 lbs  
Open Arm

### CL-2000-PTC

#### Open Arm

Extra-large hold-down clamp available with a open arm for spindle adjustment. Toggle linkage provides high holding capacity and ensures positive mechanical locking even if air pressure fails. Arm opens 83°. 1-3/4" bore double-acting air cylinder with 1/4-NPT ports. Accepts any 1/2-13 spindle and (2) CL-1213-TW flanged washers. Solid-arm version accepts a CL-113000-BR bolt retainer. 100 psi maximum input air pressure. Shipping weight 6.0 lbs.

**Holding capacity:**

**1000 lbs**

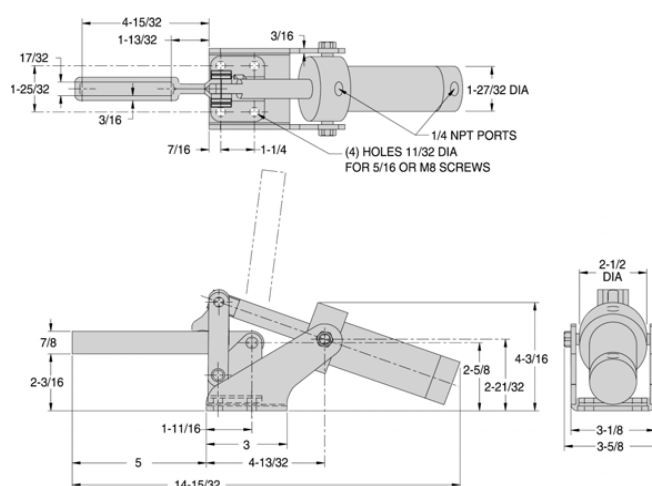
**Clamping force at 100 psi, at center of arm**

**680 lbs**

Also available with position sensing:

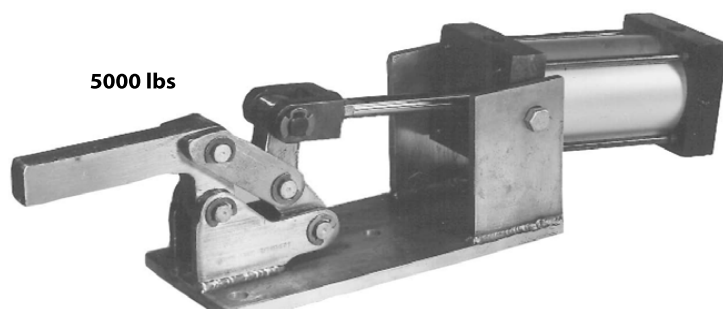


Please see our web catalog for more information.



## AIR-POWERED TOGGLE CLAMPS

INFO+: SEE PAGE 415 FOR MATERIAL SPECIFICATIONS



### CL-3000-PTC

Heavy-duty hold-down clamp with a solid forged steel clamping arm. Toggle linkage provides high holding capacity and ensures positive mechanical locking even if air pressure fails. Arm opens 83°. 2-1/2"-bore double-acting air cylinder with 1/4-NPT ports. 150-psi maximum input air pressure. Shipping weight 15.0 lbs.

**Holding capacity:**

**5000 lbs**

**Clamping force at 100 psi, at center of arm:**

**1600 lbs**

